



RACE BOOK

2014





Sharing the Sailing Community



Terremoto – CYC Boat of the Year

Jan Anderson Photo

Corinthian Yacht Club of Seattle Race Book 2014

Updated February 19, 2014

7755 Seaview Ave NW, Pier V
Seattle, Washington 98117

www.cycseattle.org • 206.789.1919 • office@cycseattle.org

Contents

Let's Go Sailing!.....	1
Club Programs.....	2
Racing Calendar.....	3
Race Registration Procedure.....	4
Entry Fees and Season's Passes.....	5
Notices of Race – Lake Washington.....	6
Notice of Race Lake Tuesday/Wednesday Evening Series.....	6
Notice of Race Lake Fall Regatta.....	7
Notices of Race – Puget Sound.....	8
Notice of Race Center Sound Series.....	8
Notice of Race Center Sound Series: Blakely Rock Race.....	9
Notice of Race Center Sound Series: Scatchet Head Race.....	10
Notice of Race Center Sound Series: Three Tree Point Race.....	11
Notice of Race Puget Sound Spring Regatta (Small Boat).....	12
Notice of Race Puget Sound Spring Regatta (Big Boat).....	13
Notice of Race Sound Wednesday/Thursday Evening Series.....	14
Race Information Sperry Top-Sider NOOD Regatta.....	15
Notice of Race CYC Jack & Jill Race.....	16
Notice of Race Midsummer One Design Regatta.....	17
Notice of Race Puget Sound Sailing Championship (Small Boat).....	18
Notice of Race Puget Sound Sailing Championship (Big Boat).....	19
Notice of Race Turkey Bowl.....	20
Appendix.....	22
CYC Notice of Race Addendum.....	22
Puget Sound Sailboat Safety Regulations.....	25
US Coast Guard Warning.....	26
Contacts.....	27
Buoy Course Marks (position relative to R/C).....	28
Puget Sound Geographic Marks (fixed locations).....	29

Let's Go Sailing!



At CYC we have returned to our origins of just being a bunch of people who love sailing and racing.

Along the way, we've realized that having a club makes about as much business sense as owning a boat, which is to say that as a traditional business it's not particularly viable. Instead, we have a club to do more together than we can on our own, just like owning a boat allows you to take friends sailing.

With our club, we welcome and connect people who love sailing and we create a platform for members to do things for each other and our community. That's important because sharing our lifestyle can mean a lot to people and their families. Putting on races is a great example of our members doing things together. Racing is the marquee of our club and the pinnacle of our sport.

If you are a member please welcome our guest racers. If you are a future member, please join us in our mission to share the sailing community. Even if you don't happen to own a boat, you can own our yacht club and claim your equal stake and influence in supporting our sailing way of life through our club.

Brian Watkins
Commodore



Corinthian Yacht Club of Seattle continues to be dedicated, promoting the best sailboat racing in the area. This year our club will focus on bringing sailing back. We're going to make it cool again. We are simplifying the format and structure of CYC racing to attract new members and make it easier to enjoy the sport and recreation we are passionate about.

CYC's clubhouse location, racing venues, community, and staff enable our membership to experience more racing than anyone else in the nation. Our events hope to cover all the various expectations of a premier sailing club. We would like to offer social activities and educational opportunities to enhance the value of our racing program. We encourage all types of sailors to come play!

This is your Yacht club. Please take the time to reflect on what you would like it to be, and help make it happen. As Racing Fleet Captain, I am here to help bring the talents and resources of our membership together and to build our sailing community.

Jon Henderson
Fleet Captain Race

Club Programs

Racing

Corinthian sailors have been racing on Lake Washington at Leschi since our founding in 1945 and on Puget Sound out of Shilshole since our members built our clubhouse in 1969. We have heard that we run more races than any other private club in the country. Corinthian members are passionate about racing.

Evening racing on Lake Washington runs from mid-April through mid-September with J-24s racing on Tuesday and Thistles, San Juan 24s, and Thunderbirds racing on Wednesday. The Lake Fall Regatta follows the evening series for a weekend event out of Leschi. Additional fleets are welcome to form.

Evening racing on Puget Sound runs over the same period with keelboats racing on Wednesday and Star, Laser, Snipe, Tasar, I-14, 505 and other centerboard boats racing on Thursday. We offer the Center Sound Series mid-distances races in March and run several weekend buoy-racing regattas. Over the summer months, we also support casual racing on Friday nights off the breakwater.

Cruising

The Pacific Northwest is a special place to cruise and many of our members take part on cruises organized by volunteers. Over a dozen events are in the works for this year. Members with boats bring them and members without boats ship as crew. Former, current, and perhaps future racers all take part in cruising.

Youth Sailing

We've ramped up our youth sailing with the Sail School providing summertime sailing camp to over 120 juniors in conjunction with Sail Sand Point; parent-directed Sail Team with training, regatta support, and advanced clinics; Family Open Sailing Night to introduce young families to the marine environment; and the welcoming of the Sea Scouts aboard the *S/V Yankee Clipper* into our club.

Education

Our members love to learn and share. Each year we run dozens of education events including the Rookie Rally (learn how to crew and race, free to members), pre-race strategy chalk talks, cruising presentations, first aid, US Sailing courses (race management, judging, safe powerboat handling), markset driver training, women's sailing clinic, and even bartender training.

Social

Leschi sailors often get together at the BluWater and at club-organized barbecues after racing to share stories and dinner. Our Shilshole clubhouse is open Fridays and after evening and weekend racing (over 100 nights a year). The bar is often run by volunteers and our \$5 dinners are expertly prepared by our private chef. Sometimes we're just open to hang out and other times we have a program, like live music, wine tastings, art shows, and presentations conducted by our members. Check the website calendar and join us.

Racing Calendar

JANUARY

- 5 Laser Frostbite
- 17 Annual Awards Party
- 26 Laser Frostbite

FEBRUARY

- 8-9 Frigid Digit

MARCH

- 1 Blakely Rocks Race
- 2 Laser Frostbite
- 8 Scatchet Head Race
- 16 Laser Frostbite
- 22 Three Tree Point Race
- 30 Laser Frostbite

APRIL

- 5-6 PSSR (Small Boat)
- 12-13 PSSR (Big Boat)
- 15-17 Spring Evening 1 (T,W,Th)
- 22-24 Spring Evening 2 (T,W,Th)
- 29-1 Spring Evening 3 (T,W,Th)

MAY

- 6-8 Spring Evening 4 (T, W, Th)
- 13-15 Spring Evening 5 (T, W, Th)
- 16-18 NOOD Regatta
- 20-22 Interim Evening 1 (T, W, Th)
- 27-29 Interim Evening 2 (T, W, Th)

JUNE

- 3-5 Interim Evening 3 (T, W, Th)
- 10-13 Interim Evening 4 (T, W, Th)
- 17-19 Interim Evening 5 (T, W, Th)
- 21 Jack & Jill Race
- 21-22 Midsummer One Design Regatta
- 24-26 Interim Evening 6 (T, W, Th)
- 30 Start of Junior Sail School

JULY

- 1-3 Summer Evening 1 (T, W, Th)
- 8-10 Summer Evening 2 (T, W, Th)
- 15-17 Summer Evening 3 (T, W, Th)
- 19-25 Whidbey Island Race Week
- 29-31 Summer Evening 4 (T, W, Th)

AUGUST

- 5-7 Summer Evening 5 (T, W, Th)
- 12-14 Summer Evening 6 (T, W, Th)
- 19-21 Fall Evening 1 (T, W, Th)
- 26-28 Fall Evening 2 (T, W, Th)

SEPTEMBER

- 2-4 Fall Evening 3 (T, W, Th)
- 9-11 Fall Evening 4 (T, W, Th)
- 13-14 SYC Star & Bar (@CYC)
- 16-18 Fall Evening 5 (T, W, Th)
- 20-21 Lake Fall Regatta

OCTOBER

- 4-5 PSSC (Small Boat)
- 11-12 PSSC (Big Boat)
- 24-26 SYC Grand Prix (@CYC)

NOVEMBER

- 17 Annual Membership Meeting
- 22-23 Turkey Bowl

DECEMBER

- 15 Monday Christmas Lunch
- 16 Christmas Ships Party

Race Registration Procedure

Registration

Online race registration is available at cycseattle.org. Entry forms are also available at the office and online for printing.

Deadlines

Please register as early as possible to help build your fleet. Registrations must be submitted online or received at the club by close of business (normally 5 PM) on the entry deadline. The deadline is stated in the Notice of Race and is typically the two days before the event. Registrations accepted at the discretion of the race committee after the deadline may be assessed a \$20 late fee.

Member Discount Packages

Various discount packages are available for members only (Adult/Family or Senior), as follows:

Lake Season's Pass. Good for all CYC races on Lake Washington, which includes the Spring, Interim, Summer, and Fall Evening series for either Tuesday or Wednesday night plus the Lake Fall Regatta.

Lake Season's Pass + Sound Weekend Pass. Good for all CYC lake races plus all CYC Puget Sound weekend races. This is for you if you sail the weeknights plus just one or two additional events, and you will achieve substantial discounts when you sail even more. Your efforts to sail multiple venues are greatly appreciated by your fellow members!

Sound Evening Pass. Good for CYC Puget Sound Spring, Interim, Summer, and Fall Evening series for either Wednesday or Thursday night.

Sound Season's Pass. Good for all CYC races on Puget Sound. This is usually very worthwhile if you sail six or more events, such as all four weeknights series and two weekends, or three weeknights series and three weekend events. Add even more sailing for no extra charge!

Packages are for a given owner and boat or, if you happen to change boats mid-season, for a type of boat that would continue to use the same package.

Contact

For registration issues, please contact one of the following:

CYC Office, office@cycseattle.org, 206-789-1919

Event Chairperson (see Notice of Race)

CYC Fleet Captain Race, racefleetcaptain@cycseattle.org

Entry Fees and Season's Passes

Lake Events

Tuesday/Wednesday Evening (1 of 4 series)*	See calendar for dates	\$150
Lake Fall Regatta	Sept 20-21	\$60

Sound Events

Center Sound Series		\$150
Blakely Rock Race	March 1	\$60
Scatchet Head Race	March 8	\$60
Three Tree Point Race	March 22	\$60
PSSR (Puget Sound Spring Regatta)	Small: Apr 5-6 / Big: Apr 12-13	
Keelboat		\$120
Centerboard (Double+)		\$60
Centerboard (Single)		\$40
Wednesday/Thursday Evening (1 of 4 series)	See calendar for dates	
Keelboat		\$150
Centerboard (Double+)		\$75
Centerboard (Single)		\$50
Jack & Jill	June 20	\$20
Midsummer One Design Regatta	June 20-21	
Keelboat		\$120
Centerboard (Double+)		\$60
Centerboard (Single)		\$40
PSSC (Puget Sound Sailing Championship)	Small: Oct 4-5 / Big: Oct 11-12	
Keelboat		\$120
Centerboard (Double+)		\$60
Centerboard (Single)		\$40
Turkey Bowl	Nov 22-23	
Centerboard (Double+)		\$60
Centerboard (Single)		\$40

Member Discount Packages*

Lake Season's Pass		\$500
Lake Season's Pass + Sound Weekend Pass		\$600
Sound Evening Pass		
Keelboat		\$500
Centerboard (Double+)		\$250
Centerboard (Single)		\$150
Sound Season's Pass		
Keelboat		\$700
Centerboard (Double+)		\$350
Centerboard (Single)		\$225

* Members Only (Adult/Family or Senior)

Notices of Race – Lake Washington

Notice of Race Lake Tuesday/Wednesday Evening Series

Dates: There are four Tuesday series and four Wednesday series, as follows:

	<u>Tuesday Series</u>	<u>Wednesday Series</u>
Spring Series:	Apr 15, 22, 29, May 6, 13	Apr 16, 23, 30, May 7, 14
Interim Series:	May 20, 27, Jun 3, 10, 17, 24	May 21, 28, Jun 4, 11, 18, 25
Summer Series:	July 1, 8, 15, 29, Aug 5, 12	July 2, 9, 16, 30, Aug 6, 13
Fall Series:	Aug 19, 26, Sep 2, 9, 16	Aug 20, 27, Sep 3, 10, 17

Eligibility: Open for registrants who are CYC Adult/Family or Senior members.

Classes:

Tuesdays:	J/24
Wednesdays:	Thistle, San Juan 24, Thunderbird, and other small keelboat and centerboard classes with at least five boats may apply.

Location: Lake Washington off Leschi.

Schedule:

1715 – 1745	Practice starts (when available)
1800	First warning signal
2015	No warning signal after this time

Course: Courses will typically be windward / leeward and may include leeward gates, weather offsets, and gybe marks. A target of two to three and up to four races may be sailed each day with a target time of 45 ± 15 minutes for each race.

Scoring: A boat's series score will be the total of her race scores, except that a boat's worst score will be excluded if at least six races are completed, two scores will be excluded if at least nine races are completed, and three scores will be excluded if at least twelve races are completed. This changes RRS A2. One race will constitute a series.

Time Limit: 90 minutes for the first boat in class and for other boats 30 minutes after the first boat that sails the course.

Other Provisions:

- Notice of Race amended by CYC Notice of Race Addendum.

Awards: 1st, 2nd, and 3rd in class for each series.

Registration Fee: \$150 per series (members, see Member Discount Packages)

Registration Deadline: Monday before the start of each series.

Notice of Race Lake Fall Regatta

Date: September 20-21, 2014 (Saturday and Sunday)

Location: Lake Washington off Leschi.

Classes: J/24, Thistle, San Juan 24, Thunderbird, Snipe, Etchells, and other small keelboat and centerboard classes with at least five boats may apply.

Schedule:

Saturday

0900 – 0930	Late check in
0930 – 0945	Competitor's briefing
1015 – 1045	Practice starts (when available)
1100	First warning signal
After racing	Social gathering to be announced

Sunday

1015 – 1045	Practice starts (when available)
1100	First warning signal
1600	No warning signal after this time
After racing	Awards party at regatta site

Courses: Courses will typically be windward / leeward and may include leeward gates, weather offsets, and gybe marks. A target of four and up to six races may be sailed each day with a target time of 45 ± 15 minutes for each race.

Scoring: A boat's series score will be the total of her race scores, except that a boat's worst score will be excluded if six or more races are completed. This changes RRS A2. One race will constitute a series.

Time Limit: 90 minutes for the first boat in class and for other boats 30 minutes after the first boat that sails the course.

Other Provisions:

- Notice of Race amended by CYC Notice of Race Addendum.

Awards: 1st, 2nd, and 3rd in class.

Registration Fee: \$60

Registration Deadline: September 18, 2014 (Thursday)

Notices of Race – Puget Sound

Notice of Race Center Sound Series

The Center Sound Series is a series of the following events:

Blakely Rock Race	March 1, 2014 (Saturday)
Scatchet Head Race	March 8, 2014 (Saturday)
Three Tree Point Race	March 22, 2014 (Saturday)

Classes: PHRF-NW and IRC. Other classes of at least five boats may apply. Monohull, multihull, and casual class boats will race in separate classes.

Scoring: Boats will be scored in class and overall. A boat's series score will be the total of her race scores with no scores excluded. This changes RRS A2. One race will constitute a series.

Other Provisions:

- Notice of Race amended by CYC Notice of Race Addendum.

Awards:

Each Race: 1st, 2nd, and 3rd in class.

Series: 1st overall per course and 1st, 2nd, 3rd in class.

Permanent Trophies: Permanent trophies will be awarded at the CYC Annual Party for race classes overall by race and racing classes series overall (Werner Ohmes Fog Horn Trophy). The Werner Ohmes Fog Horn Trophy is awarded to the boat with the highest score calculated as follows: A boat's score for a race is $100(N + 1 - P)/(N + 1)$ points, where P is her place in her class in that race and N is the number of starters in her class in that race; a boat that does not finish scores $(66)/(N + 1)$ points, a disqualified boat scores $(33)/(N + 1)$ points, and a boat that does not start scores 0 points; a boat's series score is the sum of her score in all races in the series.

Registration Fee: \$150 for Center Sound Series (or \$60 per race). Boats that register per race will be scored in the series for the races entered. Members, see Member Discount Packages.

Registration Deadline: February 27, 2014 (Thursday)

Moorage: Guest moorage is available at Shilshole Bay Marina. To make arrangements, call the marina office at VHF 17, 206-787-3006, or 206-601-4089 (after hours). Moorage fees are based on boat length and services.

For more information, see the Notices of Race for each race in the series.

Notice of Race

Center Sound Series: Blakely Rock Race

Date: March 1, 2014 (Saturday)

Location: Puget Sound, starting and finishing lines in Shilshole Bay.

Classes: PHRF-NW and IRC. Other classes of at least five boats may apply. Monohull, multihull, and casual class boats will race in separate classes.

Course (Racing Classes):

North Wind: Start by leaving the starting mark buoy to port, round mark "N" to port, round mark "K" to port, and finish by leaving the finishing mark buoy to port.

South Wind: Start by leaving the starting mark buoy to starboard, round mark "K" to starboard, round mark "N" to starboard, and finish by leaving the finishing mark buoy to starboard.

Course (Casual Classes):

North Wind: Start by leaving the starting mark buoy to port, round mark "N" to port, round mark "W" to port, and finish by leaving the finishing mark buoy to port.

South Wind: Start by leaving the starting mark buoy to starboard, round mark "W" to starboard, round mark "N" to starboard, and finish by leaving the finishing mark buoy to starboard.

Time of First Warning: 1000

Time Limit: 8 hours for the first boat in class and for other boats the later of 8 hours or 1 hour after of the first boat that sails the course.

Equipment Requirement Category: PIYA III or OSR 4

Other Provisions:

- Notice of Race amended by CYC Notice of Race Addendum.
- This race is part of the CYC Center Sound Series.

Awards: For the race, 1st, 2nd, and 3rd in class. For the Center Sound Series, see awards for the Three Tree Point Race.

Social Activities: Party and awards at the CYC clubhouse after racing.

Registration Fee: \$60 (or \$150 for Center Sound Series)

Registration Deadline: February 27, 2014 (Thursday)

Event Chairperson: Bill Blodgett, bill@kamgear.com

Notice of Race

Center Sound Series: Scatchet Head Race

Date: March 8, 2014 (Saturday)

Location: Puget Sound, starting and finishing lines in Shilshole Bay.

Classes: PHRF-NW and IRC. Other classes of at least five boats may apply. Monohull, multihull, and casual class boats will race in separate classes.

Course (Racing Classes):

Start by leaving the starting mark buoy to port, round Scatchet Head Lighted Gong Buoy (LL#16555) to port, and finish by leaving the finishing mark buoy to port.

Course (Casual Classes):

Start by leaving the starting mark buoy to port, round mark "U" to port, and finish by leaving the finishing mark buoy to port.

Time of First Warning: 1000

Time Limit: 9 hours for the first boat in class and for other boats the later of 9 hours or 1 hour after of the first boat that sails the course.

Equipment Requirement Category: PIYA III or OSR 4

Other Provisions:

- Notice of Race amended by CYC Notice of Race Addendum.
- This race is part of the CYC Center Sound Series.

Awards: For the race, 1st, 2nd, and 3rd in class.

Social Activities: Party and awards at the CYC clubhouse after racing.

Registration Fee: \$60 (or \$150 for Center Sound Series)

Registration Deadline: March 6, 2014 (Thursday)

Event Chairperson: Lance Staughton, twospeed@gorge.net

Notice of Race

Center Sound Series: Three Tree Point Race

Date: March 22, 2014 (Saturday)

Classes: PHRF-NW and IRC. Other classes of at least five boats may apply. Monohull, multihull, and casual class boats will race in separate classes.

Location: Puget Sound, starting and finishing lines in Shilshole Bay.

Course (Racing Classes):

Start by leaving the starting mark buoy to port, round the TTPYC Racing Buoy C to starboard, and finish by leaving the finishing mark buoy to port. The TTPYC Racing Buoy C is a white, 6 inch diameter cylinder rising 8 feet above the water located at approximately 1000 feet SW of the Three Tree Point Light.

Course (Casual Classes):

Start by leaving the starting mark buoy to port, round Duwamish Head Light to port, and finish by leaving the finishing mark buoy to port.

Time of First Warning: 1000

Time Limit: 9 hours for the first boat in class and for other boats the later of 9 hours or 1 hour after of the first boat that sails the course.

Equipment Requirement Category: PIYA III or OSR 4

Other Provisions:

- Notice of Race amended by CYC Notice of Race Addendum.
- This race is part of the CYC Center Sound Series.

Awards: For the race, 1st, 2nd, and 3rd in class.

Social Activities: Party and awards at the CYC clubhouse after racing.

Registration Fee: \$60 (or \$150 for Center Sound Series)

Registration Deadline: March 20, 2014 (Thursday)

Event Chairperson: Grady Morgan, gradymorgan@gmail.com

Notice of Race Puget Sound Spring Regatta (Small Boat)

Date: April 5-6, 2014 (Saturday and Sunday)

Classes: Laser, Star, Snipe, Tasar, 505, I-14, F18, J/24, Thistle, and other small keelboat and centerboard classes with at least five boats may apply.

Location: Puget Sound off Shilshole.

Schedule:

Saturday

0900 – 0930	Late check in
0930 – 0945	Competitor's briefing
1015 – 1045	Practice starts (when available)
1100	First warning signal
After racing	Social gathering at clubhouse

Sunday

1015 – 1045	Practice starts (when available)
1100	First warning signal
1600	No warning signal after this time
After racing	Awards party at clubhouse

Courses: Courses will typically be windward / leeward and may include leeward gates, weather offsets, and gybe marks. A target of four and up to six races may be sailed each day with a target time of 45 ± 15 minutes for each race.

Scoring: A boat's series score will be the total of her race scores, except that a boat's worst score will be excluded if six or more races are completed. This changes RRS A2. One race will constitute a series.

Time Limit: 90 minutes for the first boat in class and for other boats 30 minutes after the first boat that sails the course.

Other Provisions:

- Notice of Race amended by CYC Notice of Race Addendum.

Awards: 1st, 2nd, and 3rd in class.

Registration Fee:

Keelboat	\$120
Centerboard (Double+)	\$60
Centerboard (Single)	\$40

Registration Deadline: April 3, 2014 (Thursday)

Guest Moorage and Dry Storage: The Shilshole Marina north parking lot adjacent to the dry storage area will be available for guest dry storage. A limited amount of included guest moorage will be available between piers W and X.

Notice of Race Puget Sound Spring Regatta (Big Boat)

Date: April 12-13, 2014 (Saturday and Sunday)

Classes: PHRF-NW, IRC, J/105, Melges 24, J/70, J/80, San Juan 24, Thunderbird, Etchells, and other keelboat classes with at least five boats may apply.

Location: Puget Sound off Shilshole.

Schedule:

Saturday

0900 – 0930	Late check in
0930 – 0945	Competitor's briefing
1015 – 1045	Practice starts (when available)
1100	First warning signal
After racing	Social gathering at clubhouse

Sunday

1015 – 1045	Practice starts (when available)
1100	First warning signal
1600	No warning signal after this time
After racing	Awards party at clubhouse

Courses: Courses will typically be windward / leeward and may include leeward gates, weather offsets, and gybe marks. A target of four and up to six races may be sailed each day with a target time of 45 ± 15 minutes for each race.

Scoring: A boat's series score will be the total of her race scores, except that a boat's worst score will be excluded if six or more races are completed. This changes RRS A2. One race will constitute a series.

Time Limit: 90 minutes for the first boat in class and for other boats 30 minutes after the first boat that sails the course.

Other Provisions:

- Notice of Race amended by CYC Notice of Race Addendum.

Equipment Requirement Category: For handicap keelboats, PIYA III or OSR 4

Awards: 1st, 2nd, and 3rd in class.

Registration Fee:

Keelboat	\$120
----------	-------

Registration Deadline: April 10, 2014 (Thursday)

Guest Moorage and Dry Storage: The Shilshole Marina north parking lot adjacent to the dry storage area will be available for guest dry storage. A limited amount of included guest moorage will be available between piers W and X.

Chairperson: Joe Cline, cline.jd@gmail.com

Notice of Race

Sound Wednesday/Thursday Evening Series

Dates: There are four Wednesday series and four Thursday series, as follows:

	<u>Wednesday Series</u>	<u>Thursday Series</u>
Spring Series:	Apr 16, 23, 30, May 7, 14	Apr 17, 24, May 1, 8, 15
Interim Series:	May 21, 28, Jun 4, 11, 18, 25	May 22, 29, Jun 5, 12, 19, 26
Summer Series:	July 2, 9, 16, 30, Aug 6, 13	July 3, 10, 17, 31, Aug 7, 14
Fall Series:	Aug 20, 27, Sep 3, 10, 17	Aug 21, 28, Sep 4, 11, 18

Classes:

- Wednesdays: PHRF-NW, IRC, J/105, Melges 24, J/80, and other keelboat classes with at least five boats may apply.
- Thursdays: Laser, Star, Snipe, Tasar, 505, I-14, and other small keelboat and centerboard classes with at least five boats may apply.

Location: Puget Sound off Shilshole.

Schedule:

- | | |
|-------------|-----------------------------------|
| 1730 – 1800 | Practice starts (when available) |
| 1815 | First warning signal |
| 2015 | No warning signal after this time |

Course: Courses will typically be windward / leeward and may include leeward gates, weather offsets, and gybe marks. A target of two to three and up to four races may be sailed each day with a target time of 45 ± 15 minutes for each race.

Scoring: A boat's series score will be the total of her race scores, except that a boat's worst score will be excluded if six or more races are completed. This changes RRS A2. One race will constitute a series.

Time Limit: 90 minutes for the first boat in class and for other boats 30 minutes after the first boat that sails the course.

Other Provisions:

- Notice of Race amended by CYC Notice of Race Addendum.

Awards: 1st, 2nd, and 3rd in class for each series.

Registration Fee:

- | | |
|-----------------------|-------|
| Keelboat | \$150 |
| Centerboard (Double+) | \$75 |
| Centerboard (Single) | \$50 |

Registration Deadline: Monday before the start of each series.

Race Information

Sperry Top-Sider NOOD Regatta

Corinthian Yacht Club of Seattle and Seattle Yacht Club will be hosting the National Offshore One Design (NOOD) Regatta in Seattle for Sailing World. The information below is subject to change.

Dates: May 16-18, 2014 (Friday, Saturday, and Sunday)

Location: Puget Sound off Shilshole.

Classes to Race: One design or level rated classes, as follows:

Keelboat classes may include Santana 20, San Juan 24, Thunderbird, Star, J/70, J/80, Moore 24, J/24, 6 Meter, J/105, Melges 24, J/109, Farr 30, and other keelboat classes with a prospective minimum of 7 boats registered.

Centerboard classes may include Laser, Laser Radial, Snipe, Vanguard 15, Tasar, International 14, Thistle, 505, 49er, A-Cat, and other centerboard classes with a prospective minimum of 7 boats registered.

The deadline for classes to form is May 4, 2014 (Monday).

Registration and Information: www.sailingworld.com

Contacts: SYC: Roger Pawley, sailrap@msn.com

CYC: Steve Travis, stravis998@aol.com

Notice of Race CYC Jack & Jill Race

This race is part of the Puget Sound Jack & Jill series hosted jointly by Shilshole Bay Yacht Club, Sloop Tavern Yacht Club, Seattle Yacht Club, and Corinthian Yacht Club of Seattle.

Date: June 20, 2014 (Saturday)

Location: Puget Sound off Shilshole.

Classes: PHRF-NW. There will be two classes: Jack & Jill (crew of one male and one female) and Double Handed (two crew total). Entrants in the Jack & Jill class will also be entrants in the Double Handed class.

Schedule:

0900 – 0930	Late check in
0930 – 0945	Competitor's briefing
1100	First warning signal
After racing	Awards party at clubhouse

Course: The course will be as designated in the Sailing Instructions and may use the Buoy Course Marks and/or the Puget Sound Geographic Marks described in this Race Book.

Time Limit: 4 hours for the first boat in class and for other boats the later of 4 hours or 1 hour after of the first boat that sails the course.

Other Provisions:

- Notice of Race amended by CYC Notice of Race Addendum.
- Children 12 or under and up to two other guests are allowed on board, but may not help sail the boat or hike outside the cockpit.
- No auto pilots or wind vanes are allowed.
- Competitors (all people aboard) must wear personal floatation devices, as in RRS 40, while on the water, except briefly while changing or adjusting clothing or personal equipment.
- Boats may elect to use flying sails or not during the race. Boats will be rated for flying sails by default. Boats will be rated for non-flying sails if they do not use flying sails and immediately after finishing report to the race committee signal boat that they did not use flying sails.

Equipment Requirement Category: PIYA III or OSR 4

Awards: 1st, 2nd, and 3rd in class.

Registration Fee: \$20

Registration Deadline: June 18, 2014 (Thursday)

Notice of Race Midsummer One Design Regatta

Date: June 20-21, 2014 (Saturday and Sunday)

Location: Puget Sound off Shilshole.

Classes: Laser, Star, Snipe, Tasar, 505, I-14, Optimist, and other small keelboat and centerboard classes with at least five boats may apply.

Schedule:

Saturday

0900 – 0930	Late check in
0930 – 0945	Competitor's briefing
1015 – 1045	Practice starts (when available)
1100	First warning signal
After racing	Social gathering to be announced

Sunday

1015 – 1045	Practice starts (when available)
1100	First warning signal
1600	No warning signal after this time
After racing	Awards party at clubhouse

Courses: Courses will typically be windward / leeward and may include leeward gates, weather offsets, and gybe marks. A target of four and up to six races may be sailed each day with a target time of 45 ± 15 minutes for each race.

Scoring: A boat's series score will be the total of her race scores, except that a boat's worst score will be excluded if six or more races are completed. This changes RRS A2. One race will constitute a series.

Time Limit: 90 minutes for the first boat in class and for other boats 30 minutes after the first boat that sails the course.

Other Provisions:

- Notice of Race amended by CYC Notice of Race Addendum.

Awards: 1st, 2nd, and 3rd in class.

Registration Fee:

Keelboat	\$120
Centerboard (Double+)	\$60
Centerboard (Single)	\$40

Registration Deadline: June 18, 2014 (Thursday)

Notice of Race

Puget Sound Sailing Championship (Small Boat)

Date: October 4-5, 2014 (Saturday and Sunday)

Location: Puget Sound off Shilshole.

Classes: Laser, Star, Snipe, Tasar, 505, I-14, F18, J/24, Thistle, and other small keelboat and centerboard classes with at least five boats may apply.

Schedule:

Saturday

0900 – 0930	Late check in
0930 – 0945	Competitor's briefing
1015 – 1045	Practice starts (when available)
1100	First warning signal
After racing	Social gathering to be announced

Sunday

1015 – 1045	Practice starts (when available)
1100	First warning signal
1600	No warning signal after this time
After racing	Awards party at clubhouse

Courses: Courses will typically be windward / leeward and may include leeward gates, weather offsets, and gybe marks. A target of four and up to six races may be sailed each day with a target time of 45 ± 15 minutes for each race.

Scoring: A boat's series score will be the total of her race scores with no scores excluded. This changes RRS A2. One race will constitute a series.

Time Limit: 90 minutes for the first boat in class and for other boats 30 minutes after the first boat that sails the course.

Other Provisions:

- Notice of Race amended by CYC Notice of Race Addendum.

Awards: 1st, 2nd, and 3rd in class.

Registration Fee:

Keelboat	\$120
Centerboard (Double+)	\$60
Centerboard (Single)	\$40

Registration Deadline: October 2, 2014 (Thursday)

Notice of Race Puget Sound Sailing Championship (Big Boat)

Date: October 11-12, 2014 (Saturday and Sunday)

Location: Puget Sound off Shilshole.

Classes: PHRF-NW, IRC, J/105, Melges 24, J/70, J/80, San Juan 24, Thunderbird, Etchells, and other keelboat classes with at least five boats may apply.

Schedule:

Saturday

0900 – 0930	Late check in
0930 – 0945	Competitor's briefing
1015 – 1045	Practice starts (when available)
1100	First warning signal
After racing	Social gathering to be announced

Sunday

1100	First warning signal
1600	No warning signal after this time
After racing	Awards party at clubhouse

Courses: Courses will typically be windward / leeward and may include leeward gates, weather offsets, and gybe marks. A target of four and up to six races may be sailed each day with a target time of 45 ± 15 minutes for each race.

Scoring: A boat's series score will be the total of her race scores with no scores excluded. This changes RRS A2. One race will constitute a series.

Time Limit: 90 minutes for the first boat in class and for other boats 30 minutes after the first boat that sails the course.

Other Provisions:

- Notice of Race amended by CYC Notice of Race Addendum.

Equipment Requirement Category: For handicap keelboats, PIYA III or OSR 4

Awards: 1st, 2nd, and 3rd in class.

Registration Fee:

Keelboat	\$120
----------	-------

Registration Deadline: October 9, 2014 (Thursday)

Notice of Race Turkey Bowl

Date: November 22-23, 2014 (Saturday and Sunday)

Location: Puget Sound off Shilshole.

Classes: Laser, Star, Snipe, Tasar, 505, I-14, Optimist, and other small keelboat and centerboard classes with at least five boats may apply.

Schedule:

Saturday

0900 – 0930	Late check in
0930 – 0945	Competitor's briefing
1015 – 1045	Practice starts (when available)
1100	First warning signal
After racing	Social gathering to be announced

Sunday

1100	First warning signal
1600	No warning signal after this time
After racing	Awards party at clubhouse

Courses: Courses will typically be windward / leeward and may include leeward gates, weather offsets, and gybe marks. A target of four and up to six races may be sailed each day with a target time of 45 ± 15 minutes for each race.

Scoring: A boat's series score will be the total of her race scores, except that a boat's worst score will be excluded if six or more races are completed. This changes RRS A2. One race will constitute a series.

Time Limit: 90 minutes for the first boat in class and for other boats 30 minutes after the first boat that sails the course.

Other Provisions:

- Notice of Race amended by CYC Notice of Race Addendum.

Awards: 1st, 2nd, and 3rd in class.

Registration Fee:

Centerboard (Double+)	\$60
Centerboard (Single)	\$40

Registration Deadline: November 20, 2014 (Thursday)

Appendix

CYC Notice of Race Addendum

The CYC Notice of Race Addendum is common language that a particular Notice of Race may specifically incorporate.

The organizing authority is the Corinthian Yacht Club of Seattle (CYC).

1 Rules

- 1.1 This regatta will be governed by the rules as defined in the Racing Rules of Sailing (RRS).
- 1.2 The prescriptions of US Sailing to the following rules apply: 34, 40, 48.1, 56, 60, 61.4, 63.2, 63.4, 64.3(b), 67, 70.5(a), 76.1, 82, 86.3, 88.2, Appendix G, R, S, and T. The text of these prescriptions is available from the US Sailing website at raceadmin.ussailing.org/rules/prescriptions.
- 1.3 Other changes to the rules may be noted elsewhere in the Notice of Race or Sailing Instructions. If the Notice of Race and Sailing Instructions are in conflict, the Sailing Instructions have precedence.
- 1.4 Prior to the publication of the Sailing Instructions, changes to the Notice of Race will be available on the CYC website at www.cycseattle.org. After the publication of the Sailing Instructions, changes to the Notice of Race will be available on the official notice board described in the Sailing Instructions.

2 Eligibility and Entry

- 2.1 Entrants must register online at www.cycseattle.org, or by form delivered to CYC, and pay appropriate fees by the registration deadline. Registration after the deadline may be accepted at the discretion of the organizing authority and may require an additional late fee.
- 2.2 Boats must be insured with valid third-party liability insurance with coverage of at least \$300,000 per incident.
- 2.3 A boat wishing to use sails with identification different from her own must receive permission from the organizing authority by the registration deadline or when her late registration is accepted. This changes RRS 77.
- 2.4 A boat racing in a handicap class must ensure that her correct rating is issued and recorded by the class organization by the registration deadline or when her late registration is accepted. Boats participating without a valid class certificate will not be entered or scored and her entry fee may not be refunded. A change in a boat's handicap class rating will take effect on the day it is recorded by the class organization. Changes are not retroactive. When a boat's rating changes between races that are part of a series, the boat remains in the same class in which she started the series.
- 2.5 A boat rated by her handicap class in consideration of water ballast may use water ballast as rated. This changes RRS 51.

3 Operating and Equipment Requirements

- 3.1 Sailing is an activity that has an inherent risk of damage and injury. Competitors in this event are participating entirely at their own risk. See RRS 4, Decision to Race. The responsibility for a boat's decision to participate in a race or to continue racing is hers alone. The race organizers (organizing authority, race committee, protest committee, host club, sponsors, or any other organization or official) will not be responsible for damage to any boat or other property or the injury to any competitor, including death, sustained as a result of participation in this event. By participating in this event, each competitor agrees to release the race organizers from any and all liability associated with such competitor's participation in this event to the fullest extent permitted by law.
- 3.2 For centerboard boats, competitors must wear personal floatation devices, as in RRS 40, and, for regattas November through March, must also wear a wetsuit or drysuit. These requirements apply while on the water except briefly while changing or adjusting clothing or personal equipment.
- 3.3 For regattas on Puget Sound, keelboats must comply with one of the two following sets of equipment requirements, (a) or (b), according to the category requirement identified in the Notice of Race:
- (a) *Pacific International Yachting Association (PIYA) Special Regulations Governing Minimum Equipment and Accommodation Standards* for 2013 effective March 1, 2013 (PIYASR). The text of these regulations is available from the PIYA website at www.piyasailing.net. The following changes apply:
- (1) PIYASR 3.8 interpreted that a radar reflector with any dimension less than 6 inches does not meet the requirement.
- (b) *ISAF Offshore Special Regulations 2014-2015 (OSR)*, without US Sailing prescriptions. The text of these regulations is available from the International Sailing Federation (ISAF) website at www.sailing.org/documents/offshorespecialregs. The following changes apply to OSR Categories 3 and 4:
- (1) OSR 3.02.1, 3.11, 3.19, and 3.22 not required for boats under 9 meters or boats under 12 meters with crew torso position inboard and mostly below the local sheer line except briefly to perform a necessary task.
 - (2) OSR 3.04.3 and 3.04.4 not required.
 - (3) OSR 3.12 not required.
 - (4) OSR 3.14 not required for boats under 9 meters without lifelines or boats under 12 meters without lifelines with crew torso position inboard and mostly below the local sheer line except briefly to perform a necessary task.
 - (5) OSR 3.27.5 not required for permanently sealed, non-serviceable LED fixtures.
 - (6) OSR 3.28.1 required as in Category 3. If using outboard motor, it must be on its operating mount and easily inserted into the water for immediate use including during severe sea and wind conditions.

- (7) OSR 3.28.3 required as in Category 3 and (b) duration requirement changed to 6 hours.
- (8) OSR 3.29.1 (a)(i) changed to "an emergency antenna", (b)(ii) not required, and (f) not required.
- (9) OSR 4.04.2 (c) not required.
- (10) OSR 4.06.1 each anchor required must include commercially manufactured anchor which meets the anchor manufacturer's recommendations based on the specifications of the vessel, and dedicated suitable rode which is at least 150' in length which includes at least one half boat length of suitable chain.
- (11) OSR 4.07.1 (b) changed to "two watertight flashlights".
- (12) OSR 4.10.1 radar reflector must have a minimum dimension of at least 150 mm (6 inches) and must be displayed at least 13 feet (4 meters) above the waterline.
- (13) OSR 4.14 not required.
- (14) OSR 4.26.4 (f) and (g) not required.
- (15) OSR 5.01.1 (a) and (b) replaced by US Sailing prescription to RRS 40, (c) required from one hour before sunset until sunrise.

3.4 For regattas on Puget Sound, keelboats must comply with U.S. Coast Guard regulations.

3.5 For regattas on Puget Sound, keelboats must be operated in accordance with the Puget Sound Sailboat Safety Regulations, available in this Race Book.

3.6 Penalties under CYC Notice of Race Addendum 3 may be less than disqualification. This changes RRS 64.1.

4 Scoring

4.1 The time limit is the maximum allowable time from a boat's starting signal to her finish time or a time of day. A boat that does not finish within the time limit will be scored Did Not Finish (DNF). This changes RRS 35.

4.2 A boat that did not start (OCS), did not finish (DNF), retired (RET), or is disqualified (OCS, DSQ, DNE, DGM, BFD) will be scored the number of finishers plus one. A boat that did not start (DNC, DNS) will be scored the number of finishers plus two. This changes RRS A4.2. RRS A9 is deleted.

4.3 Corrected times for PHRF-NW handicap classes will be calculated using the Time on Distance method.

5 Sailing Instructions

5.1 Sailing Instructions will be available two days before the regatta on the CYC website at www.cycseattle.org or, if not available on the website, on the notice board at the CYC clubhouse.

Puget Sound Sailboat Safety Regulations

2002 Revision as adopted by Shilshole Bay Yacht Club, Sloop Tavern Yacht Club, Corinthian Yacht Club of Seattle, and Seattle Yacht Club

We must share Puget Sound with its commercial traffic, including many deep-water vessels and tows. It is sobering to note that, if your boat is one mile dead-ahead of a freighter coming down the Sound at normal speed, and the freighter's helm is put hard over to avoid you, the freighter's bow will miss you, but her stern will not! Obviously, this implies that early and decisive action is required to keep your boat out of the path of a large oncoming vessel or tow.

1. Yachts must not sail across a tow line, too close ahead, or too close alongside of commercial traffic. Deep water vessels have limited ability to change course and speed. Barges under tow can yaw unexpectedly well out to the side at speeds essentially the same as they are being towed. Yachts should not pass less than one mile ahead and 1/4 mile to the side of large vessels.
2. Rule 10 of the International and Inland Rules to Prevent Collisions at Sea (COLREGS) requires that no power-driven vessel less than 20 meters (66 feet) in length, and no sailing vessel (of any size) may impede the safe passage of a power-driven vessel following a Vessel Traffic System (VTS) Lane.
3. Rule 9 of the COLREGS requires that no power vessel of less than 20 meters (66 feet) in length and no sailing vessel (of any length) shall impede the safe passage of any vessel which can navigate only within a narrow channel or fairway. Puget Sound can be considered a "narrow channel" for most large commercial traffic. "Impede" means to cause to alter speed or course or to take evasive action.
4. A yacht in position where it may impede commercial traffic must exit from the "danger area" immediately, under auxiliary power if necessary. If power is used, it must be reported to the Race Committee at the finish line. Also, a written report must be made on a protest form, showing the location, time, duration of power use, speed, direction of exit, and that the competitive position of the yacht was not improved. If the last item cannot be demonstrated adequately, a time penalty may be imposed.
5. Radar reflectors must be flown at all times when racing. They must meet IMO recommendations (i.e., of metal plates of sufficient rigidity to maintain a 90 degree angle), be not less than 12 1/2 inches in diameter, and be installed not less than 4 meters (13 ft.) above the water. See PIYA Special Regulations paragraph 3.8.
6. Navigation lights must be shown between sunset and sunrise as required by the International Rules of the Road.
7. Observed and/or reported violations of the safety regulations may be protested. The Race Committee shall have the option of issuing a "warning" when deemed appropriate. Warnings are recorded and may be considered when judging any future reports.

US Coast Guard Warning

The following information was provided by the US Coast Guard.

Do not approach within 100 yards of any Navy Vessel, Washington State Ferry, or Ship. If you need to pass within 100 yards of these vessels in order to ensure a safe passage in accordance with the Navigation Rules, you must contact the ship on VHF-FM channel 16 or 13. (33 CFR 165.2030, 165.1317, 165.1313)

You must operate at minimum speed within 500 yards of any of these vessel types.



Violations of these Security Zones are a felony offense, punishable by up to 6 years in prison and/or up to \$250,000 in fines.

Contacts

Leadership Team

Commodore	Brian Watkins	brian.watkins.cyc@live.com
Vice Commodore	Stuart Burnell	stuartburnell@outlook.com
Rear Commodore	Jerry Diercks	jerrydiercks1@gmail.com
Jr. Staff Commodore	Bruce Van Deventer	bruce.vandeventer@gmail.com
Secretary	Wanda Creitz	wanda28@hotmail.com
Treasurer	Chris Pittack	chrispit@yahoo.com
Fleet Captain Race	Jon Henderson	racefleetcaptain@cycseattle.org
Fleet Captain Cruise	Hans Reinhardt	reinhardt.hans@gmail.com
Director	Michele Rogalin	michele.rogalin.cyc@gmail.com
Director	Kirk Utter	kirk@remotesatellite.com
Director	Derek DeCouteau	ddecouteau@yahoo.com
Director	Melanie Edwards	uffdamel@gmail.com
Director	Paul Kalina	paulkalina@hotmail.com
Director	Nicolas Ford	nicholas.p.ford@gmail.com

Race Organization Contacts

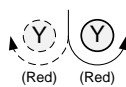
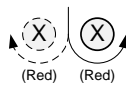
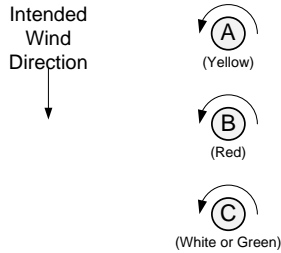
Fleet Captain Race	Jon Henderson	racefleetcaptain@cycseattle.org
Lake Protest Chair	Wayne Balsiger	webalsiger@comcast.net
Sound Protest Chair	Jared Hickman	jared@celebrationboatworks.com
PHRF Handicapper	Matthew Wood	cabsavfan@hotmail.com

Business and Race Management Staff

Business Services Manager	Rachelle O'Haleck	office@cycseattle.org 206-789-1919
Principle Race Officer	Kevin Cunningham	kevinc_cyc@yahoo.com
Principle Race Officer	Charley Rathkopf	charley-cyc@rathkopf.org

Buoy Course Marks (position relative to R/C)

Please note that the Sailing Instructions for a particular race may use modified or different mark descriptions than described here.

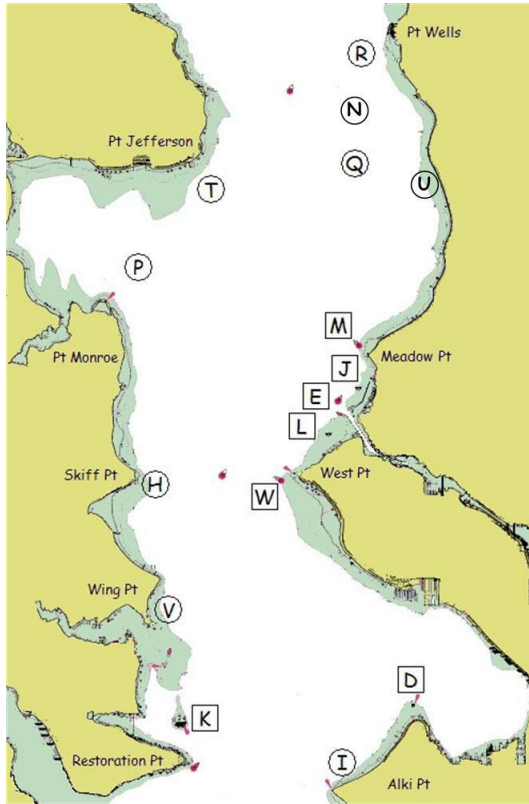


The course diagram for buoy course marks shows the general orientation of the race committee signal boat ("R/C"), other marks (identified by the letters S, A, B, C, O, G, X, Y, Z and F), and the intended wind direction. All marks other than the race committee signal boat are inflatable buoys. Positions are approximate and the diagram is not to scale.

Notes:

- S When a starting mark for a downwind start, may be on either side of the race committee signal boat.

Puget Sound Geographic Marks (fixed locations)



Bearings are magnetic. Distances are nautical miles (NM). Bearings, distances, and positions are approximate. Each temporary mark is shown with its label in a circle. Each permanent mark is near its label in a square box.

- D Duwamish Head Lt. (LL #16910)
- E Shilshole Bay Approach Buoy (LL #16785)
- H Temporary mark 0.3 NM E of Skiff Pt.
- I Temporary mark 0.5 NM N of Alki Pt.
- J Shilshole Bay N Mooring Buoy 0.25 NM SSW of N entrance
- K Blakely Rock (LL #16830)
- L Shilshole Bay S Mooring Buoy 0.5 NM SW of S entrance
- M Meadow Pt. Buoy (LL #16765)
- N Temporary mark 1.0 NM E of Traffic Separation Lane Lighted Buoy SF (LL #16745)
- P Temporary mark 0.5 NM NNE of Pt. Monroe
- Q Temporary mark 3.0 NM bearing 340° from Meadow Pt. Buoy
- R Temporary mark 0.5 NM SW of Pt. Wells
- T Temporary mark 0.5 NM SE of Pt. Jefferson
- U White spar buoy 2.9 NM bearing 6° from Meadow Pt. Buoy at 47° 44.4N, 122° 22.95W
- V Temporary mark 0.3 NM NNE of Wing Pt.
- W West Pt. Buoy (LL #16805)

CYC Business Members

Thank you for sharing your support of our sport through our club.





Sharing the Sailing Community



Clubhouse at Shilshole Bay Marina, Ballard

If you love sailing, please consider joining the Corinthian Yacht Club of Seattle. We need all the people who enjoy the club to sign up and be a part of supporting our community through our club. Even if you don't happen to own a boat, you can own our yacht club and claim your equal stake and influence in supporting our sailing way of life through our club. The Adult/Family membership is just \$35 a month. Talk with your friends who are members about joining.

7755 Seaview Ave NW, Pier V
Seattle, Washington 98117

www.cycseattle.org • 206.789.1919 • office@cycseattle.org